

USER GUIDE:

**GET TO KNOW
YOUR NCS
COLOURPIN II**

1. Download

Get the app, NCS Colourpin on
the [App Store](#) or [Google Play](#)



2. Connect

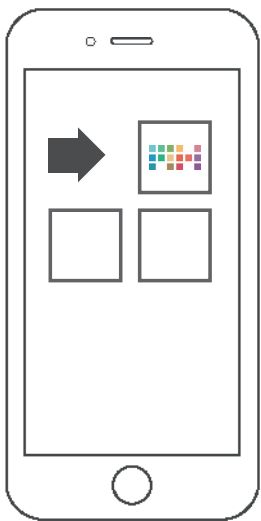
Start the Bluetooth function on your smartphone, by going to:

Settings > Bluetooth > On

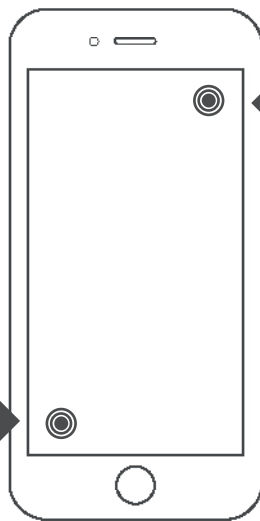


3. Pair

Connect your Colourpin to a smartphone.



Open Colourpin app



Connect device to scan

Press the connect symbol in the app to search for your Colourpin.



Start your Colourpin

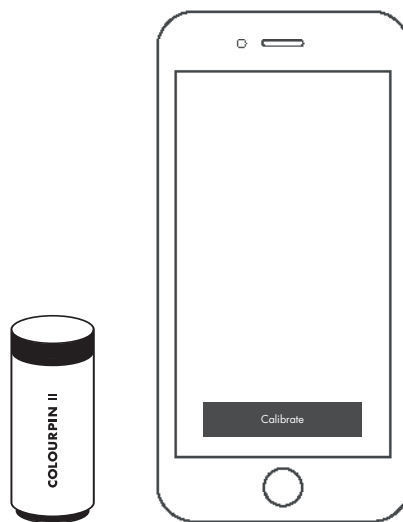
Press the button on your Colourpin to connect.

When your Colourpin pulse slowly in blue, it's searchable. When it pulse faster it's connecting.

Press Colourpin button again to confirm.

4. Calibrate

Calibrate your device.

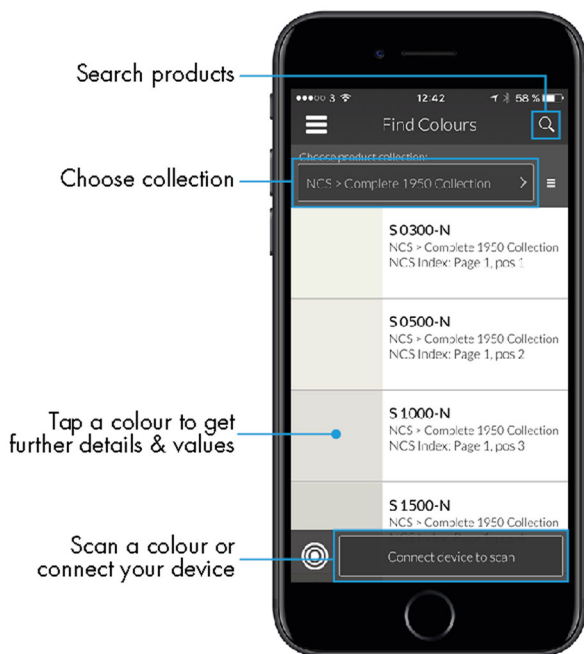


Calibrate Colourpin

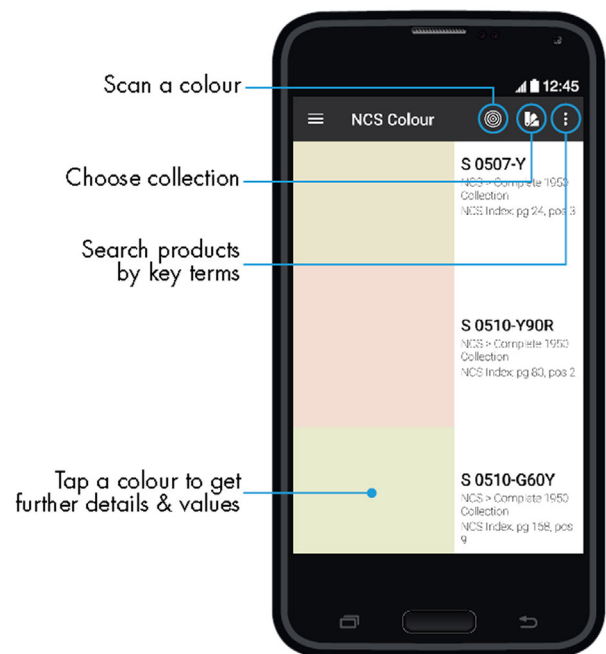
Keep the calibration lid on and press the calibrate device button on your smartphone. The app tells you when the calibration is done.

5. Quick start

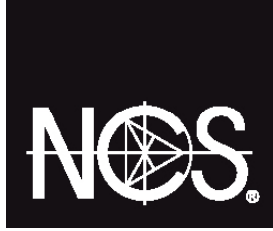
A few smart app functions to keep in mind.



iOS



Android



CONTACT

Keep updated on new features by
subscribing to our newsletter, or visit *ncscolour.com*

Let us know what you think!
Share your thoughts by emailing us
at *info@ncscolour.com*