

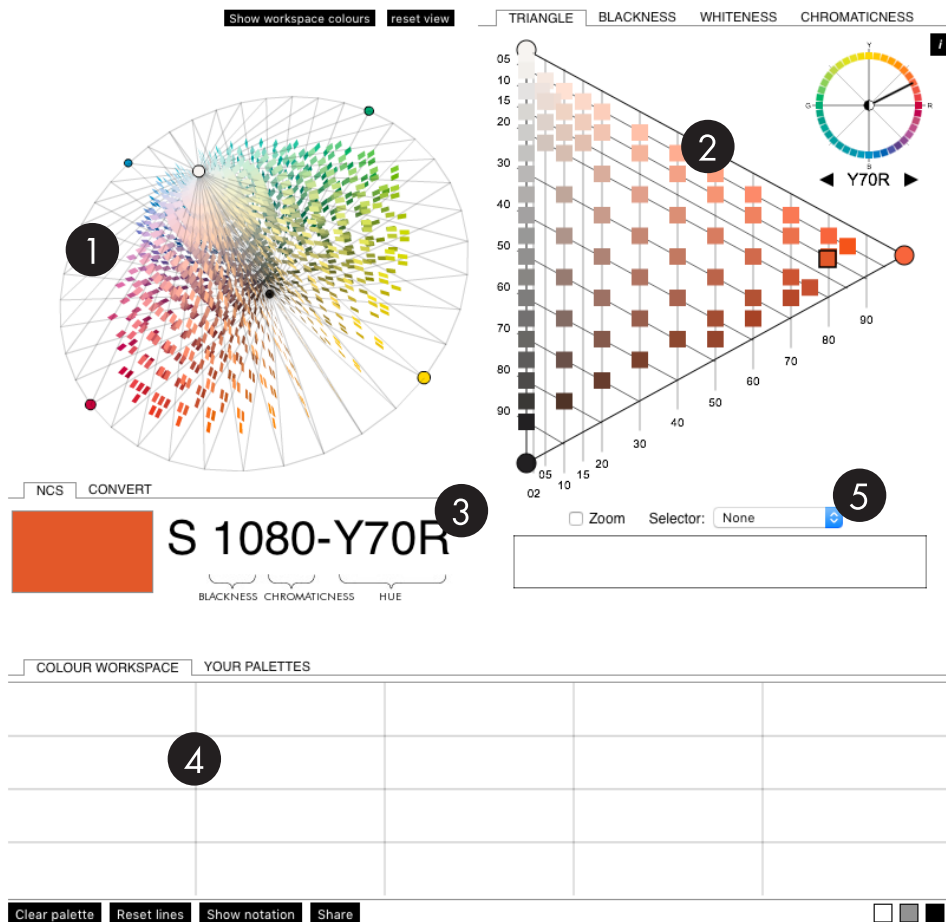
NAVIGATOR 2.0 PREMIUM

USER GUIDE

INTERFACE

NCS Navigator is split into five parts:

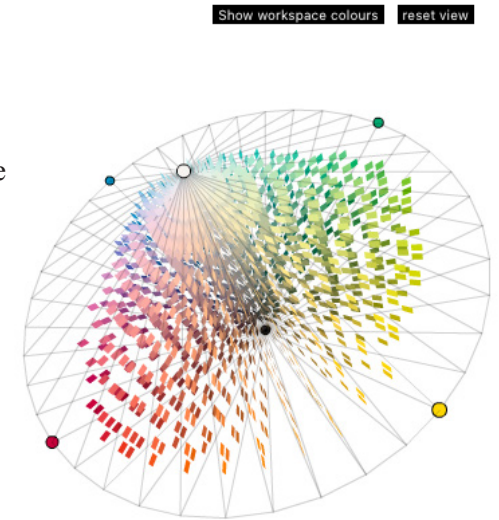
1. **NCS Colour Space** showing all 1950 NCS Original Colours in 3D
2. **NCS Colour Triangle** showing each hue triangle found in the NCS 1950 Original Collection with tab links to blackness, whiteness and chromaticness
3. **Colour Information viewer** below the 3D Colour Space
4. **Colour Workspace** at the bottom of the screen
5. **Colour Selectors** which can be used to find matching colour combinations



1 NCS Colour Space view

NCS Colour Space displays all NCS 1950 Original Colours in 3D. Click and drag to view the Colour Space from different angles.

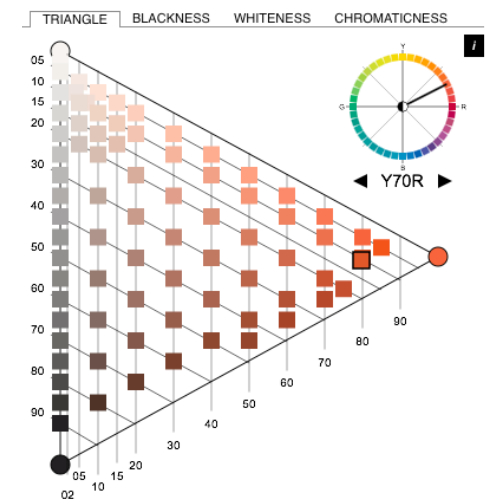
- Clicking **Show workspace colours** will show your selected colours in the 3D view.
- Clicking **Reset view** will reset the 3D colour space to the initial state including all NCS 1950 original colours.



2 NCS Colour Triangle view

NCS Colour Triangle displays each hue triangle found in NCS 1950 Original Collection. The hue value describes the percentage of the two adjacent elementary colours.

- Browse through the different hues with the NCS Colour Circle to the top right by clicking on a hue in the colour circle, or by clicking on the underlying arrows.
- If you only need the greyscale, click in the middle of the colour circle.
- To place a colour in your **Colour Workspace** (palette), double-click on a colour within the colour triangle.

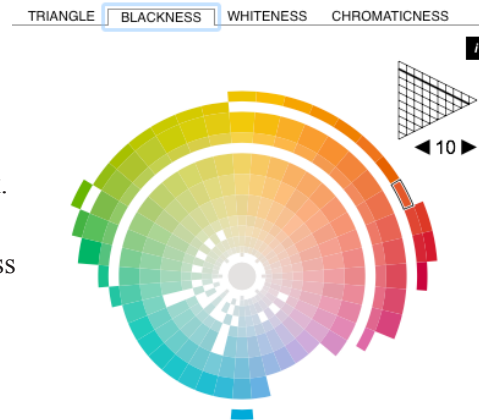


The tabs links **Triangle**, **Blackness**, **Whiteness** and **Chromaticness** will change the view mode to show colours from different cross sections of NCS Colour Space. As you change each cross section, the main 3D Colour Space will show the position of the selected colours.

Blackness view

This option will change the view mode to show colours sharing the same blackness, i.e. the perceived amount of black in the colour relative to pure black.

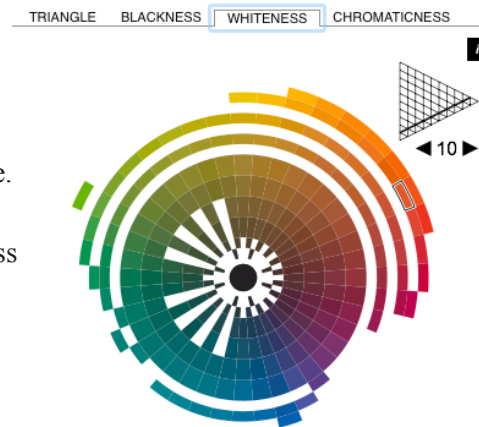
- To increase or decrease the blackness of the cross section, use the triangle at the top right, or the underlying arrows.
- As with the **Triangle** view, double clicking a specific colour will automatically drop it into your **Colour Workspace** (palette).



Whiteness view

This option will change the view mode to show colours sharing the same whiteness, i.e. the perceived amount of white in the colour relative to pure white.

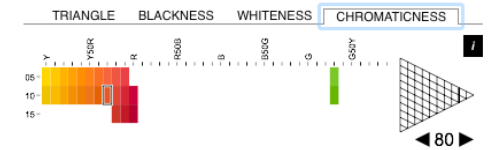
- To increase or decrease the whiteness of the cross section, use the triangle at the top right, or the underlying arrows.
- As with the **Triangle** view, double clicking a specific colour will automatically drop it into your **Colour Workspace** (palette).



Chromaticness view

This option will change the view mode to show colours sharing the same chromaticness. Chromaticness is a scale between the achromatic greys and the most chromatic colour of a specific hue, i.e. how strong it is.

- To increase or decrease the chromaticness of the cross section, use the triangle at the top right, or the underlying arrows.
- As with the **Triangle** view, double clicking a specific colour will automatically drop it into your **Colour Workspace** (palette).



3 Colour Information viewer



For each colour selected its NCS Notation, colour values and lightness values will be displayed in the colour information box. These values can be used for all major graphic design, image and web design software to ensure colour control between the web and reality using NCS Notations.

- The last active colour will fill the larger of the boxes, while its notation will appear to its right
- As you hover over the colours in the Colour Triangle, the lower portion of the box will change according to where your cursor lies
- Double clicking a colour will make that colour appear in the larger box and the notation will change accordingly
- If you wish to view a specific colour and know its NCS Notation, type its NCS Notation into the notation field and hit enter. Note that this only works if a chosen colour is part of the NCS 1950 Original Collection.

Conversion

If you wish to see the conversion value information for the active colour, click the **Convert** tab to see RGB, CMYK (Coated and Uncoated) and Lab for Print.

NCS CONVERT LIGHTNESS

NCS S 0540-G90Y

R G B				sRGB
251	232	126		
245	232	131		AdobeRGB

C M Y K				Coated
0	0	62	0	
0	0	60	0	Uncoated

L*	a*	b*	
92	-4	53	45/0

Lightness

If you wish to see the lightness information for the active colour, click the **Lightness** tab to see NCS Lightness (v) and luminous reflectance factor (Y_l).

NCS CONVERT LIGHTNESS

NCS S 0540-G90Y

Y_l	v	Lightness
79.02	0.91	

4

Colour Workspace

Colours selected by double clicking will be placed here. At the bottom of the workspace are several options to quickly clear the workspace, reset the lines or change the background colour for better analysis.

COLOUR WORKSPACE YOUR PALETTES COLOUR SCAN 2.0

Clear palette Reset lines Show notation Save Export Share Print

- Colours can be moved into different boxes by dragging and dropping while the lines separating them can be extended or compressed to experiment with proportions.
- If you wish to remove certain colours from a palette double-click them.
- For a quick overview of the colours you have selected, check the **Show notation** box.
- To see where your colours lie in the 3D Colour Space, click **Show in Colour Space** above the 3D model.
- Change the background of the **Colour Workspace** by clicking the white, grey or black square in the lower right corner.
- To save your colour workspace as a palette, click the **Save** button located under the **Colour Workspace** area.
- To export your palette to digital design or architecture software, press the **Export** button and read the instructions below on how to import your palette into your software.

Save function

Saved palettes can be found in the **Your palettes** tab.

COLOUR WORKSPACE YOUR PALETTES COLOUR SCAN 2.0

My palette

My palette

My palette

Load Rename Delete

- In order to keep track of your saved palettes, name them by clicking on a saved palette and hit the **Rename** button.
- You can now choose a suitable name for future reference.
- To delete a palette, click on the palette you want to delete and hit the **Delete** button. Note that deleted palettes cannot be restored.
- Click **Load** to use one of your saved palettes in Navigator.

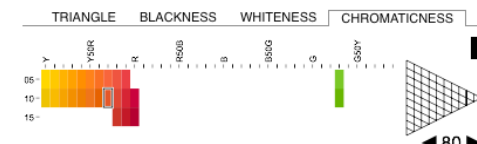
5

Colour Selectors

There are a number of different selectors which can be used to create quick colour combinations. A selector will show all colours intersected by the selector line in the colour flow box below the selected view mode (**Triangle**, **Blackness**, **Whiteness** or **Chromaticness**). Choose an option from the Selector drop-down menu to see colours according to whiteness, blackness or chromaticness (indicated by a black line). By clicking on different positions in the selected view mode the position of the selector will move. To add all colours to the colour workspace, click the button **Add these colours to workspace**.

Selector : Chromaticness

This creates a line where all the colours share the same Chromaticness. Move the position of the line by clicking on a new colour position in the NCS Colour Triangle.





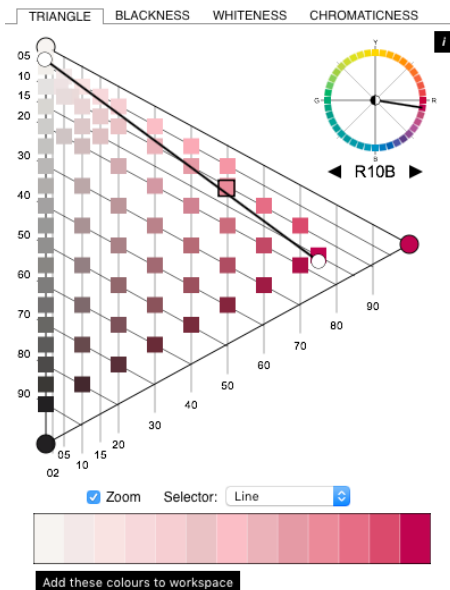
Selector : Whiteness

This creates a line where all the colours share the same whiteness. Move the position of the line by clicking on a new colour position in the NCS Colour Triangle.



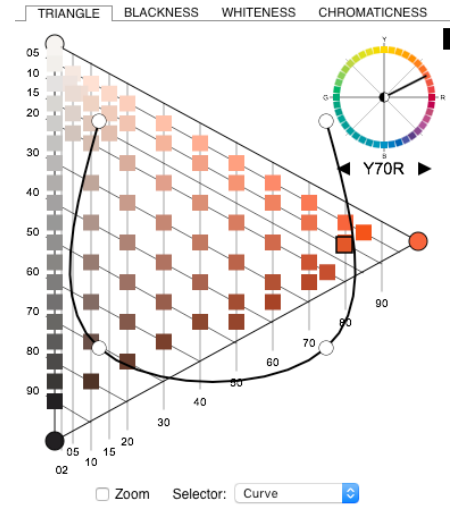
Selector : Blackness

This creates a line where all the colours share the same blackness. Move the position of the line by clicking on a new colour position in the NCS Colour Triangle.



Selector : Line

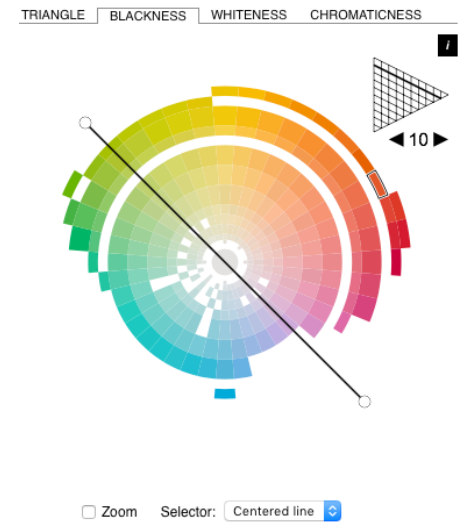
This creates a moveable and extendable line. Each colour crossed by the line will be shown below the colour flow box. The position and length of the line can be changed by dragging on the white circles at its tip.

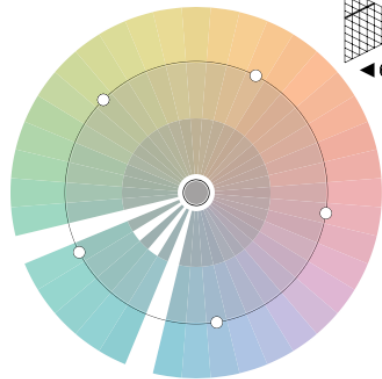


Selector : Curve

Like the Line, this function gives the user a curve, the angle and direction of which can be altered by dragging on the white circles. The position and length of the curve can be changed as well by dragging on the white circles at its tip.

When looking at the colours using the **Blackness** or **Whiteness** tab, there are two more selector options.





Selector : Wheel 3, 4 or 5

Similar to the Opponent line, these wheels have a different number of tips, each of which will show the colour it covers. This will give 3, 4 or 5 colours of the same nuance divided by equal distance in hue.



NCS COLOUR AB

+46 (0)8 617 47 00 • info@ncscolour.com • ncscolour.com
social media: [@ncscolour](https://twitter.com/ncscolour) • [#ncscolour](https://www.instagram.com/ncscolour)