

Quality  
report  
pre-order  
2021

# Quality certificate

STOCKHOLM, JUNE 16<sup>TH</sup> 2021

To ensure high colour accuracy and reliable colour samples, NCS Colour performs rigorously quality controls in production.

Quality controls are executed by NCS Colour in Stockholm, Sweden. The colour is checked three times during production; mix, coat and final product, to ensure premium colour appearance. NCS colour samples are produced with EU-approved pigments and accordingly to NCS primary masters with global-leading colour accuracy and consistency.

NCS quality report refers to quality levels set out in Swedish standard SS19104 referred to in ASTM 2970.

We are proud to declare that the pre-order production 2021 is hereby approved according to quality level 1.

Controlled and certified,

NCS Colour



*NCS - the Natural Colour System® is a registered trademark and may only be used commercially after a license agreement has been signed with NCS Colour AB.*

NCS COLOUR AB  
Igeldammsgatan 30  
P.O. Box 49022  
SE-100 28 Stockholm

+46 (0)8 617 47 00  
info@ncscolor.com  
ncscolor.com



# NCS QUALITY LEVELS

NCS quality levels define the greatest allowable colour difference between the match and NCS primary standard through tolerance classes. The tolerance classes are specified for the D65, A and FL11 illuminates. The table below also includes tolerance limits for specular gloss values in 60° measurement angle.

## NCS QUALITY LEVEL 1

- 80% within NCS Tolerance class A
- 100% within NCS tolerance Class B

## NCS QUALITY LEVEL 2

- 70% within NCS tolerance class A
- 90% within NCS tolerance class B
- 100% Within NCS tolerance class C

NCS Tolerance Class	Maximum $\Delta E$			Specular Gloss 60°
	D65	A	FL11	
A	0.5	0.6	0.6	17.5 ± 2.5
B	1.0	1.1	1.2	17.5 ± 4.5
C	1.5	1.6	1.8	17.5 ± 5.5

## MEASUREMENT CONDITIONS

Measurement values are evaluated according to CIE 15:2004. Measurement geometry di:8° (diffuse illumination, specular component included), UV component included, readings every 10 nm from 360 to 750 nm. All  $\Delta E_{2000}(1:1:1)$  values are calculated according to CIE DE2000 in accordance with CIE 142-2001. NCS S 0500-N (white) is used as a sample backing in reflectance measurement. Standard light sources used are D65, A and F11 (CIE 15:2004). Gloss measurements in accordance to ISO 2813, 60°.

## CONTROLLED AND CERTIFIED

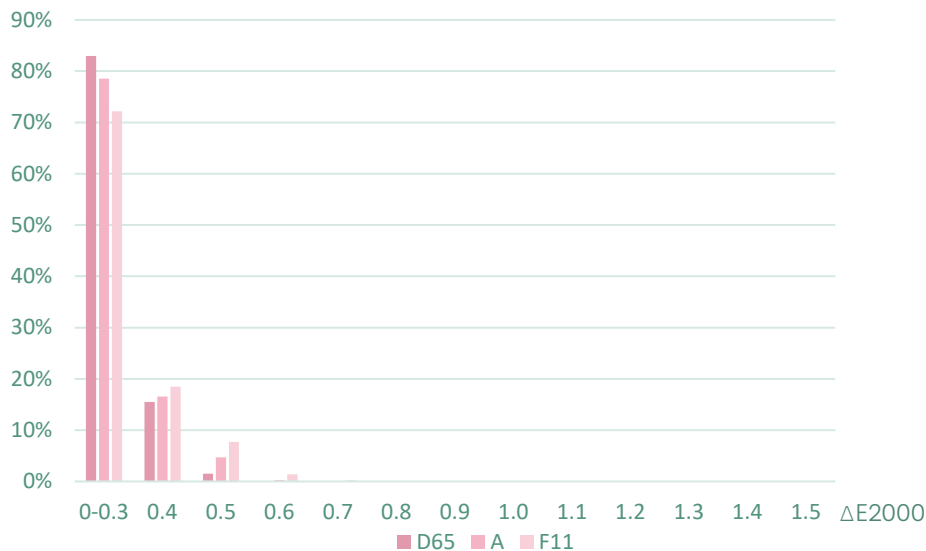
NCS Quality symbol confirms that the product is controlled by NCS Colour and comply with NCS Quality levels. Look for NCS quality stamp in your products.



# PRODUCTION RESULTS

The tables and graphs below show the deviation of each colour in respective product to NCS primary standards at quality control of pre-order 2021.

## NCS INDEX



	D65, $\Delta E_{2000}$	A, $\Delta E_{2000}$	F11, $\Delta E_{2000}$	Gloss, 60°
A	100.0%	99.9%	99.8%	90,3%
B	100%	100%	100%	100%
C	100%	100%	100%	100%

## NCS A4\*

	D65, $\Delta E_{2000}$	A, $\Delta E_{2000}$	F11, $\Delta E_{2000}$	Gloss, 60°
A	100%	100%	100%	100%
B	100%	100%	100%	100%
C	100%	100%	100%	100%

\* 268 colours produced as A4 sheets in pre-order 2021.

## NCS CASCADE

	D65, $\Delta E_{2000}$	A, $\Delta E_{2000}$	F11, $\Delta E_{2000}$	Gloss, 60°
A	100%	100%	100%	97,6%
B	100%	100%	100%	100%
C	100%	100%	100%	100%